

# tauranga art gallery

toi tauranga



**Tauranga Art Gallery Trust  
Annual Report 2011**

# CONTENTS



1.0	Introduction	2
2.0	Trustees	2
3.0	Chairperson's Report	4
4.0	Director's Report	6
5.0	Exhibitions	8
	The Miles Art Award	9
6.0	Education and Visitor Programmes	10
	Education and Visitor Programmes Manager's Report	10
	In Brief	14
7.0	Staff	16
8.0	Communications	17
9.0	Friends of the Gallery	19
9.0	Financial Performance	19
	Statement of Comprehensive Income	21
	Statement of Financial Position	22
11.0	Financial Statements & Audit Report	23

## 1.0 INTRODUCTION

The Principal activity of the Tauranga Art Gallery Trust (TAGT or 'the Trust') is to govern a public art gallery in Tauranga. The Tauranga Art Gallery (TAG or 'the Gallery') researches and presents exhibitions of historical, modern and contemporary art.

This is the 13th annual report of the TAGT since its establishment in 1998. This report outlines the activities of the TAGT for the year ending 30 June 2011.

## 2.0 TRUSTEES

The Trustees as at 30 June 2011 were

**Graeme Horsley (chair)** - MNZM, LFNZIV/LFPINZ, FRICS, AF Inst D.

**Graham Young** - JP (NZ); PostGrad Dip Ed M; BEd; Dip Phys Ed; Dip Tchg; Associate Fellow NZ Institute of Management.

**Robert Cross**

**Phillida Perry** - LLB.

**Gerald Gibbard (audit committee chair)** - B.C.A.

**Te Rahui August** - BCS; Grad Dip Tchg (Sec).

**Neil Te Kani**

**Mary Hackett** - Dip.Bus Studies; RGON; Health Services Management Unit.

During the financial year, Mary Dillon and Ann Pritchard, retired from the Board at the completion of their tenure.

## Trust Office

Tauranga Art Gallery is situated at 108 Willow Street, Tauranga.

3

Post address:  
PO Box 13255  
Tauranga 3141

Phone: 07 578 7933

Website: [www.artgallery.org.nz](http://www.artgallery.org.nz)



## 3.0 CHAIRMAN'S REPORT



In 2010 – 2011, the Gallery enjoyed record attendances off the back of some excellent exhibitions that truly captured the essence of a public art gallery in providing a venue for the display of visual art that appealed to a cross section of the citizens of Tauranga and the Western Bay of Plenty.

Particularly pleasing was the success of the Gallery's education programme that resulted in over 9,000 school children visiting the gallery and accessing the programme. Children are the lifeblood of any community and their early introduction to art and culture bodes well for the future of our wonderful city.

Throughout the year we have enjoyed visits by the glitterati of New Zealand art including Hamish Keith, Chris Saines, John Judge, Sarah Hillary, Gregory O'Brien, Jonathan Mane-Wheoki and Dame Robin White. Their praise of the Gallery building, the exhibition spaces and the Gallery staff's work was an endorsement that we are doing something right. This theme has been repeated in many magazines and national news media coverage all of which is a credit to Tauranga as the Gallery improves the visitation experience to the area.

### **Governance**

During the year, the terms of two foundation Trustees came to an end and we said goodbye to Mary Dillon and Ann Pritchard. Mary and Ann had been involved with the Gallery since the idea of a Tauranga Public Art Gallery was first floated and their service has been invaluable.

Over the year new Trustees were appointed including Gerald Gibbard, Te Rahui August, Mary Hackett and Neil Te Kani. They join Phillida Perry, Robert Cross, Graham Young and I as pro-bono Trustees and Board members.

In an attempt to create efficiencies in operating the Gallery we moved, during the year, to outsource many of our back office functions to staff in Tauranga City Council. This has been enormously successful and has allowed us to reduce staff numbers along with accessing bulk procurement efficiencies.

In accord with good governance practice the Trustees operate with sub-committee delegations to audit and finance, remuneration and appointments, education and marketing committees. I wish to record the Board's thanks to Gerald Gibbard in particular for his extraordinary work in the finance area of the Gallery.



## Finance

5

---

At the start of the year we forecast an operational loss however, with cost containment and some excellent support from Friends of the Gallery, we are reporting an operational profit for the year of \$96,690. The Tauranga City Council's refusal to fund inflation increases in our operational grant continues to place immense pressure on the Gallery to seek external funding from bequests, friends and other sources. Over the past year we were assisted with funding by a grant from the Western Bay of Plenty District Council along with some substantial grants from local Trusts, and to these organisations and individuals we owe an enormous vote of thanks.

During the year we experimented with charging for entry to an exhibition, but despite this being for an iconic New Zealand artist, the result was disappointing in that only one third of attendees to the Gallery over the time of the exhibition chose to meet the cost of \$5 to see the wonderful Rita Angus' works.

## Thank You

Finally, I would like to record my thanks to Penelope Jackson, our Gallery Director, and her staff for their tireless efforts in promoting the Gallery to one and all over the past year. The results speak for themselves, this has been a great year for the Gallery and without staff this would simply not have been possible.

Thank you also to my fellow Trustees who volunteer significant time and effort into the efficient running of the Gallery; sometimes it must feel as if they do so with very little in the way of genuine recognition.

Thank you to the Friends of the Gallery, your help and assistance is truly appreciated and without your volunteers at different functions we would not be able to offer many of our services.

And to the various funders and supporters, thank you for all your efforts. You have allowed us to be the Gallery that we are today.

Graeme Horsley  
MNZM, LFNZIV/LFPINZ, FRICS, AF Inst D.  
Chairman  
Tauranga Art Gallery Trust

## 4.0 DIRECTOR'S REPORT ▼

With over 56,000 visitors during 2010-11, the Tauranga Art Gallery is one of the country's leading regional public galleries. The Gallery opened in late 2007 in the newly refurbished former BNZ building. With flexible exhibition spaces and exciting visitor programmes the Gallery continues to develop and encourage a core audience. Presenting art and culture to the Bay of Plenty region, as well as nationally, continues to cement the Gallery's place in the community.



The 2010-11 year has seen further fine-tuning to both the exhibition and visitor programmes. Still a relatively new public art gallery, the past year was a time to reflect about what we exhibit and how we disseminate information about art. A new strategy was put in place that looks to the future, in particular it focuses on: relationships, exhibitions, collections and visitor experience.

Exhibitions from other major galleries enhanced the Gallery's schedule this last year. *Femme du Monde*, courtesy of Dunedin Public Art Gallery, showcased a large number of works by one of New Zealand's leading modernists, Frances Hodgkins. In addition, a smaller number of her works, from private local collections, were included. Both *Rita Angus: Selected Works* and *Drawn from Italy* were loaned from the Museum of New Zealand Te Papa Tongarewa. Again, works of such high calibre would never have been exhibited in the Bay of Plenty prior to the establishment of the Tauranga Art Gallery. Colin McCahon's *Urewera Mural* (Department of Conservation and Auckland Art Gallery Toi o Tāmaki) provided a hugely engaging, much publicised, work that attracted it's own audience. Our audience has truly benefited from having access to the Nation's collections. The building of relationships with other galleries is fundamental to our rich exhibition programme.

The Gallery only has a small collection but nevertheless exhibits it when possible. This last year saw *Artful Spies*, an art detective styled exhibition for children and *Edward Bullmore: Life Studies*, which showcased works from the collection that had not previously been exhibited.

Tauranga Art Gallery has also put exhibitions on the road to tour. John McLean's *The Farmer's Wife and The Farmer* was shown at Puke Ariki (New Plymouth) and Expressions Gallery (Upper Hutt). More recently and into the future, *Lynley Dodd: A Retrospective*, will tour. Highly successful at Tauranga Art Gallery, thousands of visitors delighted in the origins of Hairy Maclary and his gang of animal friends.

As the director, I have worked with Tauranga City Council (TCC) over the selection of works for the newly constructed Baypark TECT Arena. These works are now part of the TCC Civic Art Collection. The TCC Civic Art Collection is cared for by Gallery staff including relocating works throughout the council buildings. This year has also seen much effort gone into the Hairy Maclary sculptural project, a Creative Tauranga initiative, but one that has needed art specific knowledge.

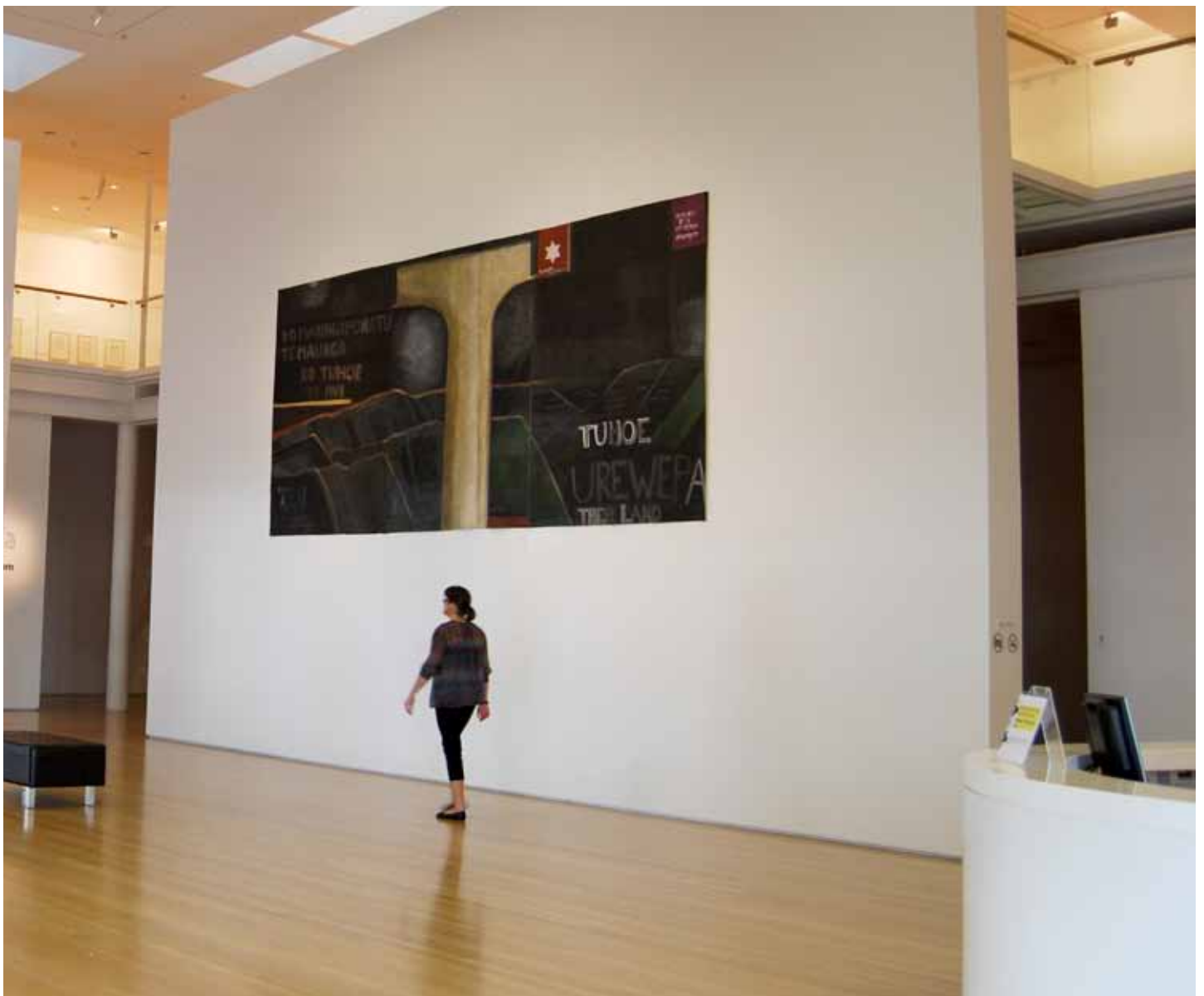
In addition to the ever-changing exhibition programme, the Gallery has offered a variety of events such as: The Tauranga Civic Choir's Christmas concert, Jan Bolwell's play *Double Portrait* about Frances Hodgkins, A Dog's Day Out in conjunction with *Lynley Dodd: A Retrospective* and Whirimako Black's jazz concert.

The small and dedicated team of staff continue to provide a gallery environment of the highest standards. The educators offer an array of programmes for school children, in excess of 9,000 for the last year. Our front-of-house team welcomes every visitor individually making them feel special. And those who hang the exhibitions do it with care and precision making for wonderful results. Both Professor Jonathan Mane-Wheoki and Colin McCahon's son, William, commented that they had never seen the *Urewera Mural* look so brilliant as it did in the Gallery's Atrium. For the team at the Tauranga Art Gallery, it doesn't get much better than that.

Penelope Jackson

M.Phil; MA(Hons); BA(Hons); Grad.Dip.Arts; Dip.Tchg; T.C.Dip.

Director



Colin McCahon: *Story of a Mural*

## 5.0 EXHIBITIONS

The Gallery had a total of 56,105 visitors for the year ending 30 June 2011.

8

Throughout the year, the Gallery presented 27 exhibitions in a variety of media, some of which were developed in-house, and others sourced from regional or dealer galleries.

Exhibition	Artist	Medium	Sourced from
Surface Tension	Contemporary NZ Artists	Painting	TAG
Bears and Smack	Bernie Harfleet & Donna Sarten	Sculpture installation	TAG
Whakapapa: Get Down Upon Your Knees	Reuben Paterson	Glitter Art	Queensland Regional Art Gallery
Edward Bullmore: Life Studies	Edward Bullmore	Painting/Drawing	TAG
Femme du Monde	Frances Hodgkins	Painting	Dunedin Public Art Gallery
Bohemians of the Brush: Pumpkin Cottage Impressionists	Various	Painting	Expressions Arts & Entertainment Centre
Top Art 2010	Various	Various	Ministry of Education
Te Pūtahitanga ō Rehua	Reuben Paterson	Video	The Artist
The Asian	Heather Straka	Painting	Dunedin Public Art Gallery
The Seven Ages of Man	Pat Hanly	Painting	Gus Fisher Gallery
The Making of the Word Witch	Margaret Mahy & David Elliot	Painting/drawing	Asburton Gallery
The Cock Fight Night	Jacquelyn Greenbank	Object Art	The Artist
In Bloom	Karl Maughan	Painting	The Artist
My Casa Is Your Casa	Lauren Lysaght	Sculptural installation	The Artist
Artful Spies	TAG Collection	Painting	TAG
Yellow	Contemporary artists	Painting/mixed media/ceramic	TAG
A Tribute	Bob Tulloch	Photography	The Artist
The Miles Art Award	Bay of Plenty Artists	Mixed	The Artists
Another Green World	Elizabeth Thomson	Sculptural installation	The Artist
Rita Angus: Selected Works	Rita Angus	Painting	Museum of New Zealand Te Papa Tongarewa
Drawn from Italy: Mantegna to Kauffman	Various	Drawing	Museum of New Zealand Te Papa Tongarewa
Lynley Dodd: A Retrospective	Lynley Dodd	Painting / drawing	TAG
McCahon: Story of a Mural	Colin McCahon	Painting	Department of Conservation
Mihaia	Brett Graham	Sculptural installation	The Artist
All That Jazz: NZ Music Videos	Various	Video	TAG
Land[e]scape	Various, contemporary	Painting, mixed media	The Wallace Arts Trust, Dealer Galleries, and the Artists
The Kelliher Collection: Past & Present	Various	Painting	The Kelliher Arts Trust
Friends of the Faces	Various	Painting, Photography	TAG
Painting New Zealand, 1890 - 1950	Various	Painting	Museum of New Zealand Te Papa Tongarewa

## The Miles Art Award

9

In August 2010, the Gallery launched the inaugural Miles Art Award in honour of one of the Gallery's first patrons, Venetta Jessie Miles. Venetta Miles, or Netta as she was known, generously donated over \$1 million to the Tauranga Art Gallery Trust for the establishment of a public art gallery. The award and exhibition will continue to be a biennial event.

The Award was open to artists, over the age of 18, who resided in the Bay of Plenty. Original work in any medium that had been completed in the previous 12 months could be submitted, albeit within certain dimensions. The Award attracted 104 entries, of which 40 made it into the exhibition.

Whakatane artist Mandy Hague won the Supreme Award, along with the accompanying \$2000 cash prize, for her *Mackerel in Tomato Sauce*.

Tauranga-based artists Eric Hussey (*A Note of Appreciation*) and John Roy (*Reflector*) were awarded The Ethel MacMillan Award, and the Friends of the Gallery Award respectively, which were each valued at \$500.

The Blur Opticians Emerging Artist Award went to Lynette Fisher, also of Tauranga, for her work *You've Got Me Wrong*.

The judges were Andrew Clifford, curator of the Gus Fisher Gallery at the University of Auckland, Tauranga Art Gallery Director Penelope Jackson, and Buildings and Exhibitions Manager Paora Allen. Most works in the exhibition were available for sale by the artist, with 20% of the proceeds of any sales going to the Tauranga Art Gallery Trust Collection Acquisitions Fund.



Supreme Award winner

Mandy Hague  
*Mackerel in Tomato Sauce* (2010)  
Acrylic on board

## 6.0 EDUCATION AND VISITOR PROGRAMMES



School attendances for the year:  
Students: 9,568  
Schools: 417 visits from 49 schools

10

### **Education and Visitor Programmes Manager's Report**

The Tauranga Art Gallery education staff have planned and delivered educational programmes to over 9,500 students involving 49 different schools in the Bay of Plenty and Western Bay of Plenty. The visits have included a range of age groups from pre-school to tertiary. Gallery education staff liaised with teachers to ensure the programmes were tailored to meet mutually approved learning outcomes. There has been a variety of worthwhile exhibitions throughout the year, and repeat class visits have mixed with classes that have never visited the Gallery before.

The Gallery receives funding for the education programmes from the Ministry of Education, under an LEOTC (Learning Experiences Outside the Classroom) contract, that has been renewed until June 2013. Our programmes have to meet certain requirements under this contract and as such, the Gallery's education programme is monitored by the New Zealand Council for Educational Research on a regular basis.

Extract from NZCER Report, April 2011

*Overall Comment:*

*Based on what we have seen, this contract appears to be very well managed and delivered in all respects. Schools in the area are fortunate to have access to an LEOTC service that supports their work so well. A feature is the funding that the Gallery has accessed through sponsorship, which allows it to fund and organise transport for schools. The standard of teaching from both educators is very high, and is much appreciated by teachers in schools. The reference group also makes a valuable contribution to the quality of the Service.*

Written feedback on programmes is received from all teachers involved, and continues to be very positive about the service we offer. Over 85% of all responses fall into the above average to excellent range.

The school holiday programmes continue to prove very popular with the younger age groups. A nominal fee is charged for all participants, which means the classes not only return a profit, but education staff are being kept busy providing worthwhile holiday activities at times when school groups are not coming to the Gallery.

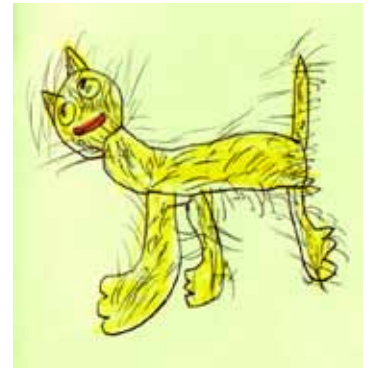


Exhibitions worthy of an extra mention this year have been the *Year 12 and Year 13 Student Art Exhibition* held in the education studio, Reuben Paterson's *Whakapapa: Get Down Upon Your Knees*, and Lynley Dodd's *A Retrospective*, an exhibition of her book illustrations. These were well received by the children and very suitable for developing education programmes around, also proving extremely popular with the visiting public.



Grant Thompson, Education and Visitor Programmes Manager

However, the highlight of the year was the positive response by early childhood education groups and junior primary school classes who attended *Lynley Dodd: A Retrospective*.



Spencer, a real dog, was used as the model for a drawing, painting and literacy activity. The children were surprised to see a real dog in the Gallery and their response to both Lynley Dodd's work and Spencer was a delight to be a part of.

### Visitor Programmes

Developing collaborative working relationships with partner organisations as well as schools and groups outside the region, is a long-term goal for the education staff. The development and delivery of associated programmes will help maximise resources and expertise, and extend the services of the Gallery.

In planning and delivering visitor programmes, the Gallery constantly strives to provide a variety of entertaining and educational events that encourage repeat visits and also reach new audiences. Over the year we have offered a broad selection of events involving theatre, music, floortalks, practical demonstrations and workshops that have been well attended. Some of these include:



Double Portrait, Finding Frances Hodgkins	Theatre	185 attended
Frances Hodgkins: Femme du Monde	Claudia Jarmen memorial lecture	15 attended
Frances Hodgkins: Femme du Monde	Tour group floortalk	
Life Drawing Classes with Graham Crow	Four classes	20 / class
What Goes Around	Visual art teachers workshop	21 attended
Pat Hanly: The Seven Ages of Man	Floortalk by Hamish Keith	30 attended
The Making of the Word Witch	Visit to Omanu Primary School	180 children involved
Gallery tour and floortalks	Probus and community (gardening and tour) groups	
Lauren Lysaght: My Casa is Your Casa	Floortalk by Lauren Lysaght	40 attended
Lecture by Penelope Jackson	The History of Art in the Bay of Plenty	30 attended
Working with Oils, by Jenny Coker	Two painting demonstrations	70 attended
Starting with Watercolours, by Susan Harrison-Tustain	Interactive demonstration and lecture	40 attended
Creating From Nature, with Karl Maughn and Elizabeth Thomson	Artists' floortalks	60 attended
Soul Talk – Whirimako Black and Nigel Gavin	Music performance	130 attended
Amadeus Ensemble	String trio performance	20 attended
Christmas Carols at the Gallery, with the Civic Choir	Music performance	190 attended
Art For All Of Us	Three guided tours and practical workshops	18 attended
The Art of Illustrating Children's Books: A discussion by Gavin Bishop	Lecture and workshop	30 attended
Lynley Dodd: A Retrospective	Artist's book signing	250 attended
Lynley Dodd: A Retrospective – Dogs Day Out	Community event	50 attended
Rita Angus: Selected Works	Floortalk by Jo Drayton	43 attended
Drawn From Italy: Mantegna to Kauffmann	Floortalk by Victoria Robson	5 attended
Colin McCahon: Story of a Mural	Floortalk by William McCahon	75 attended
Colin McCahon: Story of a Mural	Floortalk by Jonathan Mane Wheoki	60 attended
Performance by Santiago Canon Valencia	Cello performance	244 attended
Art After Dark: Aspects of NZ Art	Four lectures by Penelope Jackson	18 / lecture

## Grant Thompson

TTC; MA(Art & Design)

### Education and Visitor Programmes Manager



Reuben Paterson floor talk

### **LEOTC Contract**

The Ministry of Education Learning Experiences Outside the Classroom (LEOTC) programme contract has been operating throughout 2010/11 and the Gallery has been complying with all the requirements of the contract.

The Gallery has been successful in securing a new contract for 2011-13.

### **Kids Art Studio**

The education programme included school holiday programmes for a variety of age groups, and children's workshops over the Christmas period. This year, 657 children attended 43 workshops over the school term holidays.

### **Teacher Workshops**

A visual arts workshop was held for primary and secondary teachers in September 2010.

### **ArtBus**

The ArtBus was sponsored by TECT and BayTrust. It continues to bring school students to the Gallery from throughout the Bay of Plenty.



What Goes Around, Visual Art Teachers workshop

## Festival Initiatives

The Gallery developed exhibitions and visitor programmes around regional festivals.

15

### **The Garden and Artfest (8 – 14 November 2010).**

Exhibitions developed were *In Bloom* (Karl Maughan) and *Another Green World* (Elizabeth Thomson).

Other activities:

Launch of the Garden and Artfest held in the Atrium;

Two demonstrations on oil painting by Jenny Coker;

Demonstration / workshop on watercolour painting by Susan Harrison-Tustain;

Floortalks and reception by artists, Karl Maughan and Elizabeth Thomson.

### **Jazz Festival (22-25 April)**

In-house exhibition developed, *All That Jazz*, a viewing of New Zealand music film clips.

### **Venue Hire**

The Gallery has been the venue for five client functions, including the national Costume and Textiles Association of NZ 10th Annual Symposium in June 2011.



Six-year-old Neisha Moore with her brother Isaac 3, were excited to meet Dame Lynley Dodd.  
(copyright BoPTimes, 11.4.11. Photographer: Mark McKeown)

## 7.0 STAFF ▼

### Full-time staff

Penelope Jackson  
Paora Allen  
Grant Thompson  
Amy McFetridge  
Registrar  
Jamie Richardson

Director  
Exhibitions and Building Manager  
Education and Visitor Programmes Manager  
Visitor Services Coordinator  
Donna Forde  
Technician

### Part-time staff

Katherine Hoby  
Kathy Reid  
Ash Bailey  
Natalie Muller  
Kalou Koefoed  
Nicky Averill

Media Coordinator  
Personal Assistant/Administrator  
Educator  
Weekend Supervisor  
Visitor Host  
Visitor Host



Rita Angus billboard on Maunganui Road

## 8.0 COMMUNICATIONS ▼

17

The quarterly exhibition and event guide, *In the Picture*, was prepared in-house and distributed to 3,000+ contacts on the database throughout the Bay of Plenty, including tourist accommodation, tourist operators, i-Sites, public libraries, galleries and art outlets. This was discontinued in 2011 as new, more economic strategies were put in place.

An in-house gallery guide is given to each visitor, which informs the visitors what is exhibited in each gallery space, and catalogues for most exhibitions are prepared in-house and available for sale for a nominal amount to cover cost.

Email newsletters are sent out monthly and more frequently if required, with links back to the Gallery website for further information.

Invitations to exhibition openings are printed and posted to Gallery Friends, funders and supporters.

The Gallery launched a new, interactive website in November, designed to highlight images of current exhibitions, and be user-friendly for teachers and students involved in the education programme. Teachers are able to upload students' work onto the Schools pages as a follow up to their visit to the Gallery. Visitors to the website for the year ending 30 June 2011 are not available due to the changeover of Host providers part way through the year.

The Gallery is also proactive in Internet marketing, with its own Facebook page and listings on various national websites such as Eventfinder ([www.eventfinder.co.nz](http://www.eventfinder.co.nz)).

Screen shot of school section from website



## Advertising

The Gallery advertises in arts magazines such as ArtNews, Artzone and Creative Beat.

18

The Gallery also advertises regularly in the regional newspapers, Bay of Plenty Times and Weekend Sun.

Selective radio campaigns are put in place to help promote Gallery exhibitions and events.

The Gallery was also featured in Next, North and South, Life and Leisure, Art Monthly Australia and The Listener magazines, and the New Zealand Herald newspaper.

Screen shot of home page of website

Painting New Zealand: Art from Te Papa 1890 - 1950 - Wednesday, June 22, 2011

HOME THE GALLERY EXHIBITIONS EVENTS NEWS SCHOOLS SUPPORT US register for our newsletter GO

### exhibitions

**LAND(ES)CAPE**

Since European settlement, images of the landscape have been the most popular painting subject in New Zealand. At first, the land was recorded for topographical purposes. In the late 19th century, as photography became more available as a medium...

opening hours  
10.00am - 4.30pm daily  
(closed Christmas and Boxing Day, New Year's Day, ANZAC Day until 1pm)  
FREE admission. Donations gratefully appreciated.

### events

**THE CLAUDIA JARMAN MEMORIAL...**

Tauranga Art Gallery is thrilled to host Museum of New Zealand Te Papa Tongarewa CEO Michael...

**THE NAIROBI TRIO**

Improvisation and an expressive style make The Nairobi Trio one of New Zealand's most...

### news

Watch our video... Colin McCahon: Story of a Mural is moving on. The controversial triptych, painted...

Large scale, colourful works by an artist who considers the Bay of Plenty's Matakana Island his turangawaewae (spiritual home)...

Painting New Zealand: Art from Te Papa 1890 - 1950 features a selection of 23 paintings from the collection of the...

contact us

schools

Like Us on Facebook

## 9.0 FRIENDS OF THE GALLERY ▼

In the year ending 30 June 2011, there were 310 members of the Friends of the Gallery.

The Friends continued to host visits to artist's studios and private collections, and have become more involved with activities at the Gallery. The committee assists at all Gallery exhibition openings and has initiated several Friends' functions at the Gallery such as the Friends' Garden Party which was held in response to the regional Garden and Artfest Festival in 2010.

The Friends generously gifted an iPad to the Gallery for use in exhibitions, and sponsored the *Kelliher Collection: Past and Present* exhibition at the Gallery. Some members also loaned artwork from their personal collection to the Gallery for an exhibition titled *Faces of the Friends*.


## 10.0 FINANCIAL PERFORMANCE ▼

The Tauranga Art Gallery Trust is committed to raising 20% of the Gallery's operating budget. In the year ending 30 June 2011, it raised 30.5%

Tauranga Art Gallery is a Council Controlled Organisation (CCO), and receives ongoing operational funding from Tauranga City Council. This financial year the Gallery also reached a three-year agreement with the Western Bay of Plenty District Council for additional funding.

Tauranga Art Gallery Trustees and staff would like to extend their thanks to the following trusts and organisations that supported the Gallery's collection and exhibition programme during this financial year:

Acorn Foundation  
Bay of Plenty Regional Council  
Books-a-Plenty  
Blur Opticians  
Cooney Lees Morgan  
Friends of the Gallery  
Sheila Morgan Charitable Trust  
The Kathleen Dorothy Kirkby Trust / Guardian Trust  
The Venetta Miles Trust



A very special mention also needs to be made to David and Gulie Dowrick for their very generous donation and ongoing support to the Gallery.

Sponsorship of the ArtBus this year by TECT and Bay Trust has enabled the ongoing provision of free bus transport between the Gallery and schools in the Bay of Plenty region.

Our thanks also go to the following companies that provided the Gallery with sponsorship in kind:

Alimento Café

Cohesion Communications

GEON Print

Farmer Motor Group

LOGIS (Logistics Information Systems Ltd)

Prestige Framing & Gallery

Resene Paints

Scenic Cellars, Taupo

Sharp Tudhope Lawyers

Trustees of the Tauranga Art Gallery Trust for their pro-bono work on the Trust Board.

### **Claudia Jarman Memorial Fund**

During this financial year, the TAGT received its annual disbursement from the Acorn Foundation on behalf of the Claudia Jarman Memorial Fund. This year's lecture was held by Michael Houlihan, CEO of the Museum of New Zealand Te Papa Tongarewa. Mr Houlihan spoke about the nation's collections and Te Papa's vision for the next decade.

The TAGT will continue to accept donations on behalf of the Claudia Jarman Memorial Fund and deliver accumulated amounts to the fund as agreed with the Acorn Foundation.

## Statement of Comprehensive Income

For the year ended 30 June 2011

21

	2011 Actual \$	2010 Actual \$
<b>Revenue</b>		
Tauranga City Council operational grant	847,400	847,400
Donations, sponsorship and other grants	208,441	120,253
Interest and dividends	33,923	29,478
Other revenue	129,098	93,498
<b>Total Revenue</b>	<b>1,218,862</b>	<b>1,090,629</b>
<b>Expenditure</b>		
Employee related expenses	557,010	717,920
Depreciation and amortisation	97,749	98,134
Other expenses	459,533	459,426
Finance costs	7,880	9,697
<b>Total Expenses</b>	<b>1,122,172</b>	<b>1,285,177</b>
<b>Surplus/(Deficit) from operations</b>	<b>* 96,690</b>	<b>(194,548)</b>
<b>Other Comprehensive Income</b>		
Revaluation	0	0
<b>Other Comprehensive Income for the period</b>	<b>0</b>	<b>0</b>
<b>Total Comprehensive Income for the period</b>	<b>96,690</b>	<b>(194,548)</b>

\* Surplus includes \$42,103 which is the current year redemption of the interest free benefactor loan.

## Statement of Financial Position

As at 30 June 2011

22

	2011 Actual \$	2010 Actual \$
<b>Current Assets</b>		
Cash and cash equivalents	56,867	233,681
Inventories	19,027	17,524
Debtors and other receivables	10,911	8,405
Investments	706,216	415,259
Prepayments	244	289
Assets available for sale	6,800	628
<b>Total Current Assets</b>	<b>800,065</b>	<b>675,786</b>
<b>Non-current Assets</b>		
Property, plant and equipment	8,698,04	8,763,456
Intangibles	16,988	16,567
<b>Total Non-current Assets</b>	<b>8,715,036</b>	<b>8,780,023</b>
<b>Total Assets</b>	<b>9,515,101</b>	<b>9,455,809</b>
<b>Current Liabilities</b>		
Creditors and other payables	73,473	72,552
Employee benefit liabilities	56,611	52,827
<b>Total Current Liabilities</b>	<b>130,084</b>	<b>125,379</b>
<b>Non-current Liabilities</b>		
Interest bearing loans and borrowings	35,764	77,867
<b>Total Non-current Liabilities</b>	<b>35,764</b>	<b>77,867</b>
<b>Total Liabilities</b>	<b>165,848</b>	<b>203,246</b>
<b>NET ASSETS</b>	<b>9,349,253</b>	<b>9,252,563</b>
<b>Equity</b>		
Tauranga City Council interest in Tauranga Art Gallery Trust	1,000,000	1,000,000
Property, plant and equipment revaluation reserve	2,012,060	2,012,060
Tauranga Art Gallery Trust's interest	6,337,193	6,240,503
<b>TOTAL EQUITY</b>	<b>9,349,253</b>	<b>9,252,563</b>



Tauranga City Council was appointed to prepare the Financial Statements for the year ending 30 June 2011, and the Statements were audited by Audit New Zealand.

The audited Financial Report for the year ending 30 June 2011 is available on request.

14/09/2011

---

(Chairperson)

---

Date